



FITTING GUIDE

Piranha Off Road Products are not associated in any way with Nissan Motor Co. (Australia) Pty Ltd or any of its related companies

DETAILS	
Part Number	BTNPV8
Australian Design Registered	ⓓ 201813903
Approx. Fitting Time	2.5 Hours
Max Battery Size	10" Spiral Wound AGM
Battery Type	Optima D34
Tray Location	PSR

To Suit NISSAN PATROL Y62 PETROL V8

Recommended Isolator
DBE140SF or DBE180-SX

PARTS INCLUDED WITH TRAY			
1	Tray	7	1 x M6 Flat Washer
2	Special Top Mount	8	1 x M6 Rivnut/Nutsert
3	1 x XNV8TMB Twisted Top-Mount Bracket	9	5 x M6 Countersunk Machine Screws
4	1 x J Bolts	10	2 x M6 Bolts 30mm
5	6 x M6 Bolts 15mm	11	2 x M6 Star/Shake Proof Washer
6	8 x M6 Whizlock Nuts	12	1 x "P" Clip PS6



Nutsert / Rivnut tool required

FITTING INSTRUCTIONS

1. Remove one large & one medium sized computer and relay / junction box from their brackets. Remove pipes from clip bolted to bracket. Discard brackets.
2. Unplug loom from computers. **Note** – The two plugs are similar, mark to aid refitting in the correct locations. Unbolt two wiring earths.
3. Unclip wiring harness from along the top of the firewall and junction between inner guard and wheel arch. Manipulate loom over towards engine. (Refer Pic 1)



Pic 1

4. Bolt large computer to back of tray tab with plug sockets facing towards the engine, using 3 x M6 countersunk machine screws and whizlock nuts. (Refer Pic 4) **Note** – Leave top engine side bolt out at this stage.
5. Secure main harness out of the firewall grommet with the P-Clip to the nut on the wheel arch with 1 x M6 x 15mm bolt, to route the harness towards the engine. (Refer Pic 2)
6. Disconnect the vacuum hose at the pipe near the corner of the air box to allow re-routing of the harness under pipe, so it ends up tucked closer to the firewall. Reconnect vacuum hose. (Refer lower L/H of Pic 3)
7. Refit the clip that was removed in step 1 to the pipes, though not secured to any bracket. (Refer Pic 3)
8. Refit wiring loom earths, one to the elongated hole on the wheel arch lip (horizontal – using M6 short bolt, nut & star washer). (Refer Pic 2) and other to captive nut (vertical, adjacent to top of shocker – using M6 short bolt & star washer), (Refer Pic 3) to allow good earth points. **Note** – to achieve the best earth, remove paint from around the edges of the holes.



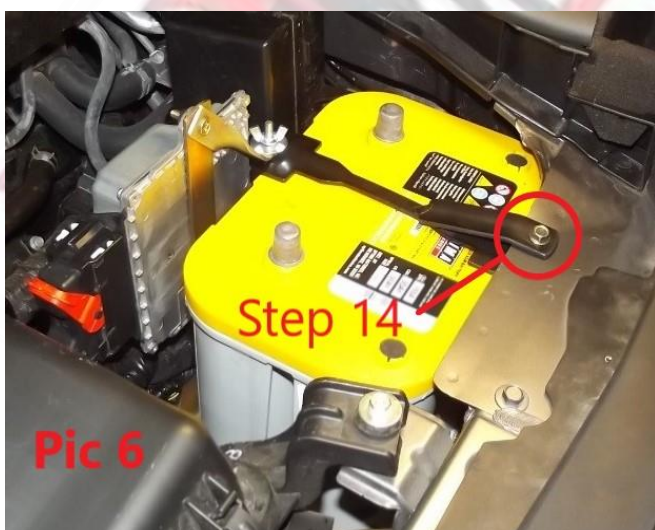
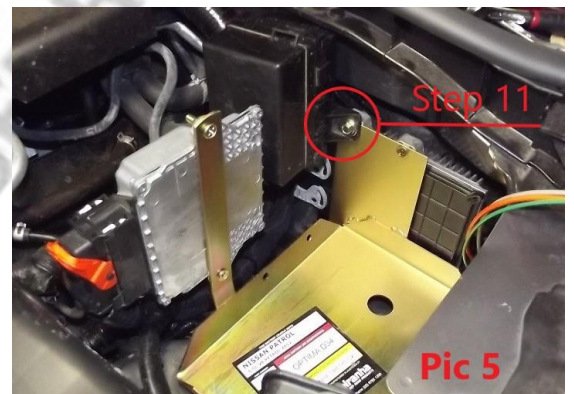
Please see reverse side for further instructions.



9. Adequately secure harness with cable ties, to prevent rubbing/chaffing on items like A/C pipework, brake lines, suspension parts etc.
10. Lower tray into approximate position, reconnect 3 plugs to the computer. Bolt tray in with 2 x M6 short bolts at the front tab, 1 x M6 nut at step down stay and 1 x M6 short bolt to inner guard. (Refer Pic 4)



11. Mount the junction box to the top engine side computer mount hole, secure with M6 long bolt, flat washer and nut. Use cable tie through tag on engine side of junction box to secure to loom. (Refer Pic 5)
12. Fit remaining computer to the tray arm with the plug facing towards the front of the vehicle with countersunk machine screws. Fit twisted bracket to battery side using the top screw – don't tighten at this stage. (Refer Pic 5)
13. Install Optima D34 battery. Fit special top mount and loosely install J bolt on engine side along with the twisted bracket to set location. (Refer Pic 6)
14. With top mount now in place mark inner guard through hole. Move top mount aside, drill a 9mm hole and install rivnut/nutsert. Secure top mount in place with M6 long bolt in rivnut. Tighten J bolt and top computer mounting screw. (Refer pic 6)



Please Note: It is the installers responsibility to check all Items have adequate clearance and are secured/protected against vibration, rubbing & chaffing.